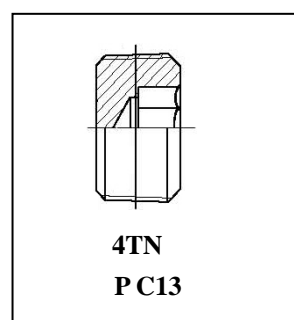
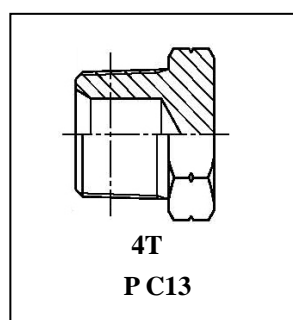
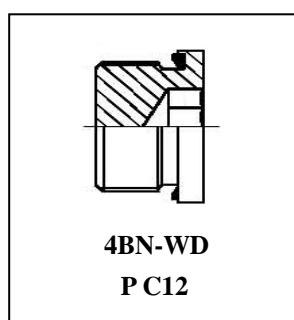
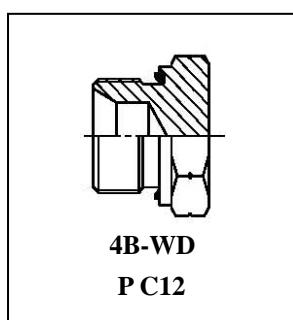
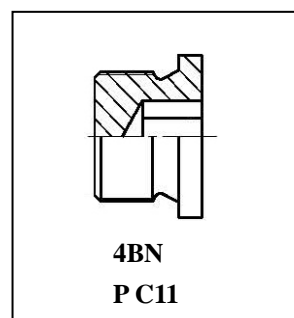
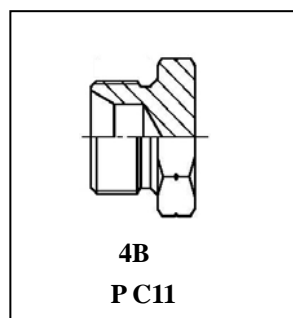
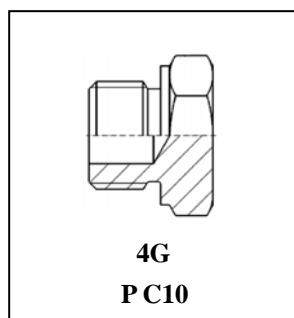
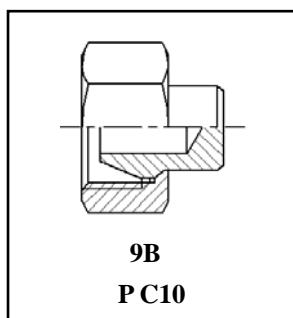


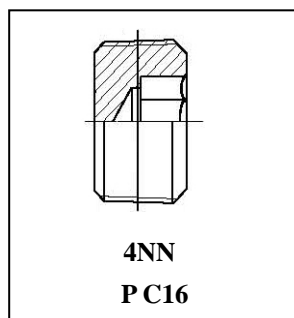
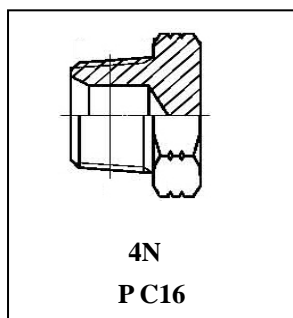
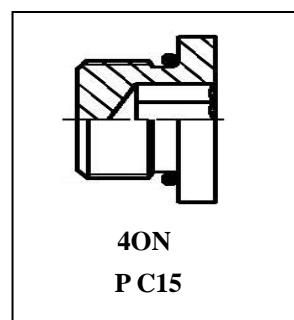
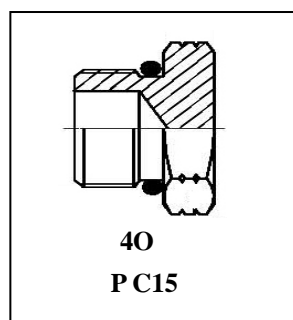
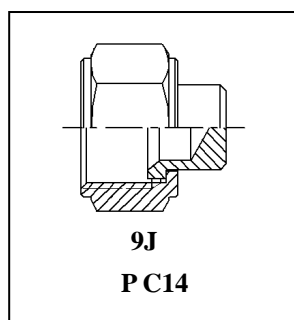
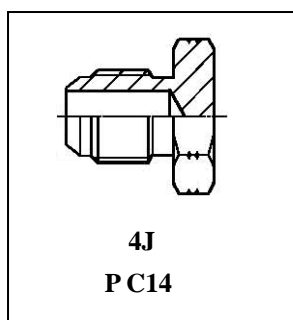
英管螺纹堵头

BSP Male Plug

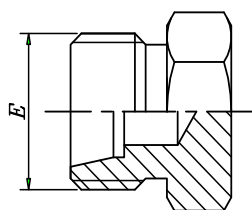


美制螺纹堵头

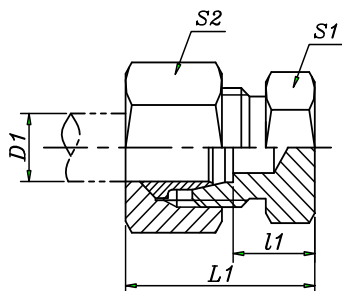
US Male Plug



公制螺纹堵头



4C
4D



4C-RN
4D-RN

4C
4D
公制外螺纹卡套堵头
PLUG

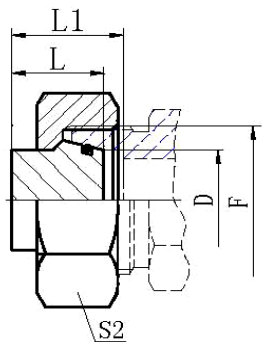
代号 PART NO.	螺纹 THREAD	管子外径 TUBE O.D	尺寸 DIMENSIONS				压力等级 MPa
	E	D	l1	L1	S1	S2	
4C-12	M12X1.5	6	7	22	12	14	31.5 轻系列 L
4C-14	M14X1.5	8	8	23	14	17	
4C-16	M16X1.5	10	9	24	17	19	
4C-18	M18X1.5	12	10	25	19	22	
4C-22	M22X1.5	15	11	26	22	27	
4C-26	M26X1.5	18	11.5	28	27	32	
4C-30	M30X2	22	13.5	30	30	36	16 轻系列 L
4C-36	M36X2	28	14.5	31	36	41	
4C-45	M45X2	35	14.5	36	46	50	
4C-52	M52X2	42	16	39	55	60	
4D-14	M14X1.5	6	11	26	14	17	63 重系列 S
4D-16	M16X1.5	8	13	28	17	19	
4D-18	M18X1.5	10	12.5	29	19	22	
4D-20	M20X1.5	12	14.5	31	22	24	
4D-22	M22X1.5	14	16	34	22	27	
4D-24	M24X1.5	16	15.5	34	24	30	40 重系列 S
4D-30	M30X2	20	17.5	39	30	36	
4D-36	M36X2	25	20	44	36	46	
4D-42	M42X2	30	20.5	47	46	50	
4D-52	M52X2	38	23	54	55	60	
							31.5重系列S

注: 如需带衬套及螺母整套订货, 则请在代号后加“RN”, 如4C-18RN。

Note: In case if you are interested to order the adapter in complete set with sleeve and nut , it is necessary to insert suffix "RN" after our part no.,for example 4C-18RN。

可按用户要求生产各种标准, 型号, 材质的产品

公制螺纹堵头



9C
9D

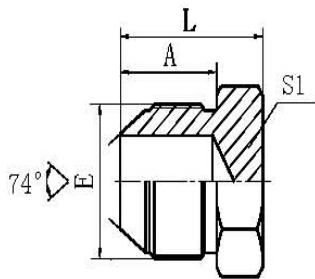
公制内螺纹卡套堵头

FEMALE PLUG

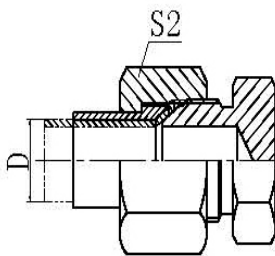
代号 PART NO.	螺 纹 THREAD		管子外径 TUBE O.D	尺 寸 DIMENSIONS			压力等级 MPa
		F	D	L	L1	S2	
9C-12		M12X1.5	6	15.5	17.5	14	31.5 轻系列 L
9C-14		M14X1.5	8	15.5	18	17	
9C-16		M16X1.5	10	16.5	18	19	
9C-18		M18X1.5	12	18	19.5	22	
9C-22		M22X1.5	15	19.5	20	27	
9C-26		M26X1.5	18	20	22	32	
9C-30		M30X2	22	21.5	22.5	36	16 轻系列 L
9C-36		M36X2	28	22.5	24.5	41	
9C-45		M45X2	35	25	29	55	
9C-52		M52X2	42	27	31.5	60	
9D-14		M14X1.5	6	16	18	17	63 重系列 S
9D-16		M16X1.5	8	16.5	18.5	19	
9D-18		M18X1.5	10	18	20	22	
9D-20		M20X1.5	12	18.5	20.5	24	
9D-22		M22X1.5	14	19	21.5	27	
9D-24		M24X1.5	16	18.5	21.5	30	
9D-30		M30X2	20	22.5	25	36	40 重系列 S
9D-36		M36X2	25	23.5	28.5	46	
9D-42		M42X2	30	25.5	32	50	
9D-52		M52X2	38	26.5	36	60	
							31.5重系列S

可按用户要求生产各种标准, 型号, 材质的产品

公制螺纹堵头



4Q



4Q-RN

4Q

公制外螺纹74°外锥堵头

METRIC MALE 74° CONE PLUG

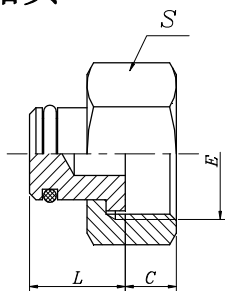
代号 PART NO.	螺 纹 THREAD	管子外径 TUBE O.D.	尺 寸 DIMENSIONS			
	E	D	A	L	S1	S2
4Q-10	M10X1	5	12	18	12	14
4Q-12	M12X1.5	6	15.7	21.5	14	14
4Q-14	M14X1.5	8	17	23	17	17
4Q-16	M16X1.5	10	18	24	17	19
4Q-18	M18X1.5	12	18	24	19	22
4Q-22	M22X1.5	14	19.5	27.5	24	27
4Q-24	M24X1.5	16	20	30	27	30
4Q-27	M27X1.5	18	20	30	30	32
4Q-30	M30X1.5	20	23	34	32	36
4Q-30E	M30X2	20	26	37	32	36
4Q-33	M33X2	22	26	37	36	38
4Q-36	M36X2	25	26	38	38	41
4Q-39	M39X2	28	26	39	41	46
4Q-42	M42X2	32	28.5	41.5	46	50
4Q-45	M45X2	34	28.5	41.5	46	55

注: 如需带衬套及螺母整套订货, 则请在代号后加“RN”, 如4Q-18RN。

Note: In case if you are interested to order the adapter in complete set with sleeve and nut , it is necessary to insert suffix "RN" after our part no.,for example 4Q-18RN。

可按用户要求生产各种标准, 型号, 材质的产品

公制螺纹堵头

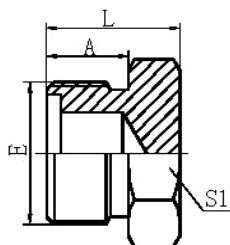


9E

公制内螺纹平面堵头

METRIC FEMALE FACE PLUG

代号 PART NO.	螺 纹 THREAD		尺 寸 DIMENSIONS		
	E		C	L	S
9E-12	M12X1.5		8	10	14
9E-14	M14X1.5		8.5	10.5	17
9E-16	M16X1.5		8.5	11.5	19
9E-18	M18X1.5		8.5	13	22
9E-22	M22X1.5		10	13	27
9E-27	M27X1.5		10	15	32
9E-30	M30X1.5		11	15	36
9E-36	M36X2		13	15.5	41
9E-39	M39X2		13	17.5	46
9E-42	M42X2		15	18.5	50
9E-45	M45X2		15	18.5	55
9E-52	M52X2		17	18.5	60



4E

公制外螺纹平面O形圈密封堵头

METRIC MALE O-RING PLUG

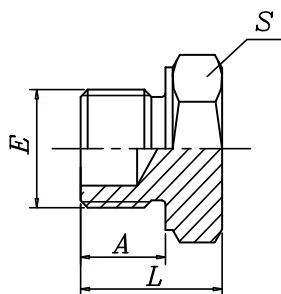
代号 PART NO.	螺 纹 THREAD	O 形圈 O-RING	尺 寸 DIMENSIONS		
	E	E 端	A	L	S
4E-14	M14X1.5	10X1.9	11	17	17
4E-16	M16X1.5	11X1.9	11	17	17
4E-18	M18X1.5	13X1.9	11	17	19
4E-22	M22X1.5	16X2.4	12	20	24
4E-24	M24X1.5	18X2.4	12	21	27
4E-27	M27X1.5	20X2.4	13	23	30
4E-30	M30X1.5	24X2.4	14	25	32
4E-36	M36X2	30X3.1	16	29	38
4E-42	M42X2	35X3.1	20	33	46
4E-45	M45X2	38X3.1	21	34	46
4E-52	M52X2	40X3.1	22	37	55

注: O形圈参数为外径与线径。

Note: The parameter of O-ring is outside diameter an ring width.

可按用户要求生产各种标准, 型号, 材质的产品

公制螺纹堵头

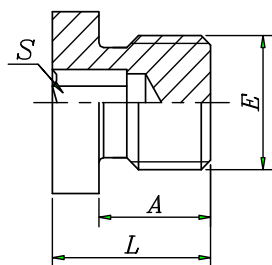


4H

公制外螺纹六角端面O形圈密封堵头ISO 6149-3

METRIC MALE L-SERIES PLUG
ISO 6149-3

代号 PART NO.	螺 纹 THREAD	O 形圈 O-RING	尺 寸 DIMENSIONS		
	E	E 端	A	L	S
4H-12	M12X1.5	9.3X2.4	11	19.5	17
4H-14	M14X1.5	11.3X2.4	11	19.5	19
4H-16	M16X1.5	13.3X2.4	12.5	23	22
4H-18	M18X1.5	15.3X2.4	14	24.5	24
4H-22	M22X1.5	19.3X2.4	15	27.5	27
4H-27	M27X2	23.5X3.0	18.5	32	32
4H-33	M33X2	29.5X3.0	18.5	34.5	41
4H-42	M42X2	38.5X3.0	19	37	50



4HN

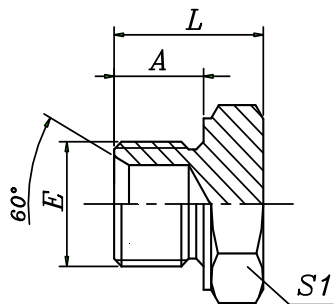
公制外螺纹O形圈密封内六角堵头
ISO 6149-3

METRIC MALE L-SERIES HOLLOW
HEX PLUG ISO 6149-3

代号 PART NO.	螺 纹 THREAD	O 形圈 O-RING	尺 寸 DIMENSIONS		
	E	E 端	A	L	S
4HN-10	M10X1	8.1X1.6	8.5	11.5	5
4HN-12	M12X1.5	9.3X2.4	11	14	6
4HN-14	M14X1.5	11.3X2.4	11	14	6
4HN-16	M16X1.5	13.3X2.4	11.5	14	8
4HN-18	M18X1.5	15.3X2.4	12.5	15.5	8
4HN-22	M22X1.5	19.3X2.4	13	16	10
4HN-27	M27X2	23.5X3.0	16	19	12
4HN-33	M33X2	29.5X3.0	16	20	17
4HN-42	M42X2	38.5X3.0	16	22	22
4HN-48	M48X2	44.5X3.0	17.5	21.5	24

可按用户要求生产各种标准, 型号, 材质的产品

公制螺纹堵头

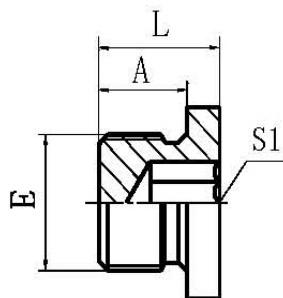


4M

公制外螺纹60°内锥组合垫密封堵头

METRIC MALE 60°SEAT PLUG

代号 PART NO.	螺 纹 THREAD		尺 寸 DIMENSIONS		
	E		A	L	S
4M-10	M10X1		8	15	14
4M-12	M12X1.5		10	17	17
4M-14	M14X1.5		11	19	19
4M-16	M16X1.5		12	20	22
4M-18	M18X1.5		12	20	24
4M-20	M20X1.5		14	23	27
4M-22	M22X1.5		14	23	27
4M-24	M24X1.5		14	25	30
4M-26	M26X1.5		16	28	32
4M-27D	M27X1.5		16	28	32
4M-30	M30X2		18	30	36
4M-30D	M30X1.5		18	30	36



4MN

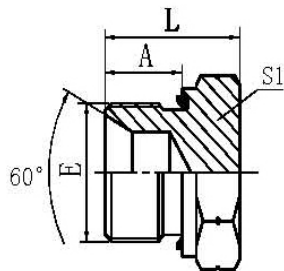
公制外螺纹组合垫密封内六角堵头

METRIC MALE HOLLOW HEX PLUG

代号 PART NO.	螺 纹 THREAD		尺 寸 DIMENSIONS		
	E		A	L	S1
4MN-12	M12X1.5		10	14	6
4MN-14	M14X1.5		11	15	6
4MN-16	M16X1.5		12	16	8
4MN-18	M18X1.5		12	16	8
4MN-20	M20X1.5		14	18	10
4MN-22	M22X1.5		14	18	10
4MN-24	M24X1.5		14	18	12
4MN-26	M26X1.5		16	21	12
4MN-30	M30X1.5		18	23	17

可按用户要求生产各种标准, 型号, 材质的产品

公制螺纹堵头

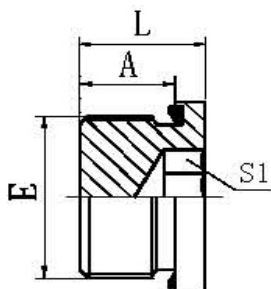


4M-WD

公制外螺纹ED胶垫密封堵头

METRIC MALE CAPTIVE SEAL PLUG

代号 PART NO.	螺纹 THREAD	胶垫 CAPTIVE	尺寸 DIMENSIONS		
	E	E 端	A	L	S
4M-10WD	M10X1	WD-B02	8	15	14
4M-12WD	M12X1.5	WD-M12	12	20	17
4M-14WD	M14X1.5	WD-B04	12	20	19
4M-16WD	M16X1.5	WD-M16	12	22	22
4M-18WD	M18X1.5	WD-M18	12	22	24
4M-20WD	M20X1.5	WD-M20	14	24	27
4M-22WD	M22X1.5	WD-M22	14	24	27
4M-27WD	M27X2	WD-B12	16	28	32
4M-33WD	M33X2	WD-B16	18	34	41
4M-42WD	M42X2	WD-B20	20	36	50



4MN-WD

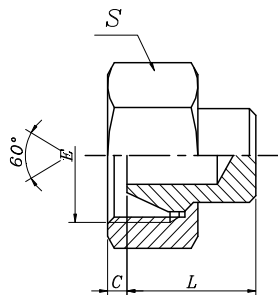
公制外螺纹ED胶垫密封内六角堵头

METRIC MALE CAPTIVE SEAL
HOLLOW HEX PLUG

代号 PART NO.	螺纹 THREAD	胶垫 CAPTIVE	尺寸 DIMENSIONS		
	E	E 端	A	L	S
4MN-10WD	M10X1	WD-B02	8	12	5
4MN-12WD	M12X1.5	WD-M12	12	17	6
4MN-14WD	M14X1.5	WD-B04	12	17	6
4MN-16WD	M16X1.5	WD-M16	12	17	8
4MN-18WD	M18X1.5	WD-M18	12	17	8
4MN-20WD	M20X1.5	WD-M20	14	19	10
4MN-22WD	M22X1.5	WD-M22	14	19	10
4MN-26WD	M26X1.5	WD-B12	16	21	12
4MN-27WD	M27X2	WD-B12	16	21	12
4MN-33WD	M33X2	WD-B16	18	24.5	17
4MN-42WD	M42X2	WD-B20	20	26.5	22
4MN-48WD	M48X2	WD-B24	22	28.5	24

可按用户要求生产各种标准, 型号, 材质的产品

英管螺纹堵头

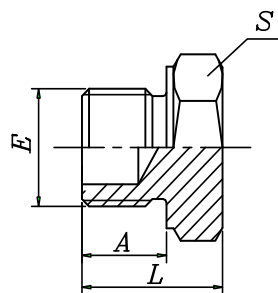


9B

英管内螺纹60°外锥堵头

BSP FEMALE 60° CONE PLUG

代号 PART NO.	螺 纹 THREAD		尺 寸 DIMENSIONS		
	E		C	L	S
9B-02	G1/8"X28		5.5	11.5	14
9B-04	G1/4"X19		5.5	13.5	19
9B-06	G3/8"X19		6.3	14.5	22
9B-08	G1/2"X14		7.5	16	27
9B-10	G5/8"X14		9.5	16.5	30
9B-12	G3/4"X14		10.9	17.5	32
9B-16	G1"X11		11.7	19	41
9B-20	G1.1/4"X11		11	21.5	50
9B-24	G1.1/2"X11		13	22	55
9B-32	G2"X11		16	26.5	70



4G

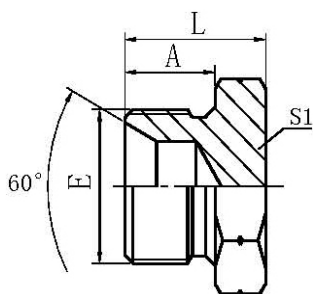
英管外螺纹六角端面O形圈密封堵头

BSP MALE O-RING PLUG

代号 PART NO.	螺 纹 THREAD	O 形圈 O-RING	尺 寸 DIMENSIONS		
	E	E 端	A	L	S
4G-04	G1/4"X19	10.8X2.62	11	19	19
4G-06	G3/8"X19	13.9X2.62	11.5	22	22
4G-08	G1/2"X14	17.1X2.62	14	27	27
4G-12	G3/4"X14	23.5X2.62	15.5	29.5	32
4G-16	G1"X11	29.7X3.53	18	34	41

可按用户要求生产各种标准, 型号, 材质的产品

英管螺纹堵头

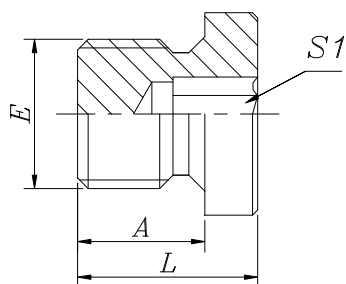


4B

英制外螺纹60°内锥面密封或
组合垫密封堵头

**BSP MALE DOUBLE USE FOR 60°
SEAT OR BONDED SEAL PLUG**

代号 PART NO.	螺 纹 THREAD		尺 寸 DIMENSIONS		
	E		A	L	S
4B-02	G1/8"X28		10	16	14
4B-04	G1/4"X19		12	18	19
4B-06	G3/8"X19		13.5	21.5	22
4B-08	G1/2"X14		16	26	27
4B-10	G5/8"X14		17.5	27.5	30
4B-12	G3/4"X14		18.5	29.5	32
4B-16	G 1"X11		20.5	34	41
4B-20	G1.1/4"X11		20.5	37.5	50
4B-24	G1.1/2"X11		23	40	55
4B-32	G 2"X11		25.5	43.5	70



4BN

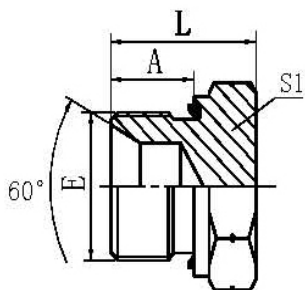
英制外螺纹60°内锥面密封或
组合垫密封内六角堵头

**BSP MALE DOUBLE USE FOR 60° SEAT
OR BONDED SEAL HOLLOW HEX PLUG**

代号 PART NO.	螺 纹 THREAD		尺 寸 DIMENSIONS		
	E		A	L	S
4BN-02	G1/8"X28		8	11	5
4BN-04	G1/4"X19		12	15	6
4BN-06	G3/8"X19		12	15	8
4BN-08	G1/2"X14		14	18	10
4BN-12	G3/4"X14		16	20	12
4BN-16	G 1"X11		16	21	17

可按用户要求生产各种标准, 型号, 材质的产品

英管螺纹堵头

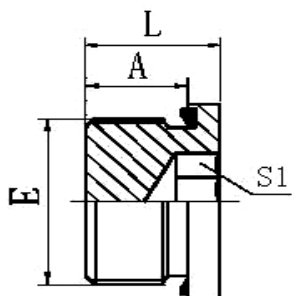


4B-WD

英制外螺纹ED胶垫密封堵头

BSP MALE CAPTIVE SEAL PLUG

代号 PART NO.	螺纹 THREAD	胶垫 CAPTIVE	尺寸 DIMENSIONS		
	E	E 端	A	L	S
4B-02WD	G1/8"X28	WD-B02	8	15.5	14
4B-04WD	G1/4"X19	WD-B04	12	19.6	19
4B-06WD	G3/8"X19	WD-B06	12	22.5	22
4B-08WD	G1/2"X14	WD-B08	14	25	27
4B-12WD	G3/4"X14	WD-B12	16	29	32
4B-16WD	G1"X11	WD-B16	18	35	41
4B-20WD	G1.1/4"X11	WD-B20	20	37	50
4B-24WD	G1.1/2"X11	WD-B24	22	40	55



4BN-WD

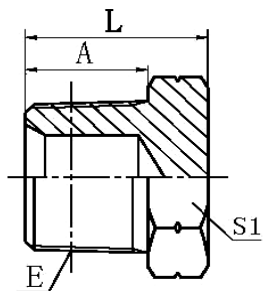
英制外螺纹ED胶垫密封内六角堵头

**BSP MALE CAPTIVE SEAL HOLLOW
HEX PLUG**

代号 PART NO.	螺纹 THREAD	胶垫 CAPTIVE	尺寸 DIMENSIONS		
	E	E 端	A	L	S
4BN-02WD	G1/8"X28	WD-B02	8	12	5
4BN-04WD	G1/4"X19	WD-B04	12	17	6
4BN-06WD	G3/8"X19	WD-B06	12	17	8
4BN-08WD	G1/2"X14	WD-B08	14	19	10
4BN-12WD	G3/4"X14	WD-B12	16	21	12
4BN-16WD	G1"X11	WD-B16	18	22	17
4BN-20WD	G1.1/4"X11	WD-B20	20	26	22
4BN-24WD	G1.1/2"X11	WD-B24	22	28	24

可按用户要求生产各种标准, 型号, 材质的产品

英管螺纹堵头

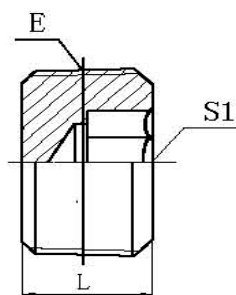


4T

英锥管外螺纹堵头

BSPT MALE PLUG

代号 PART NO.	螺 纹 THREAD		尺 寸 DIMENSIONS		
	E		A	L	S1
4T-02	R1/8"X28		10	16	12
4T-04	R1/4"X19		14.5	20	14
4T-06	R3/8"X19		15	21	19
4T-08	R1/2"X14		20	27	22
4T-12	R3/4"X14		20	29	27
4T-16	R1"X11		25.5	36.5	36
4T-20	R1.1/4"X11		26.5	38.5	46
4T-24	R1.1/2"X11		26.5	42	50
4T-32	R2"X11		30	47	65



4TN

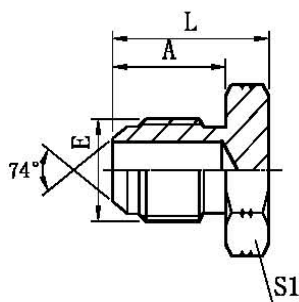
英锥管外螺纹内六角堵头

BSPT MALE DOUBLE HOLLOW
HEX PLUG

代号 PART NO.	螺 纹 THREAD		尺 寸 DIMENSIONS		
	E		L	S1	
4TN-02	R1/8"X28		8	5	
4TN-04	R1/4"X19		10	6	
4TN-06	R3/8"X19		12	8	
4TN-08	R1/2"X14		15	10	
4TN-12	R3/4"X14		18	12	
4TN-16	R1"X11		20	17	
4TN-20	R1.1/4"X11		22	22	
4TN-24	R1.1/2"X11		24	24	

可按用户要求生产各种标准, 型号, 材质的产品

美制螺纹堵头

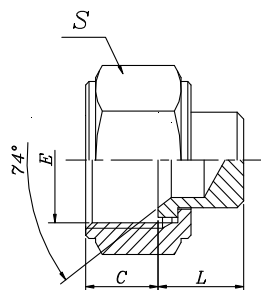


4J

美制JIC外螺纹74°外锥堵头

JIC MALE 74° CONE PLUG

代号 PART NO.	螺 纹 THREAD		尺 寸 DIMENSIONS		
	E		A	L	S
4J-04	7/16"X20		14	20	12
4J-05	1/2"X20		14	20	14
4J-06	9/16"X18		14.1	20	17
4J-08	3/4"X16		16.7	25	22
4J-10	7/8"X14		19.3	27.5	24
4J-12	1.1/16"X12		21.9	32	30
4J-14	1.3/16"X14		22.6	33.5	32
4J-16	1.5/16"X12		23.1	34	36
4J-20	1.5/8"X12		24.3	38	46
4J-24	1.7/8"X12		27.5	44.5	50
4J-32	2.1/2"X12		33.9	51	65



9J

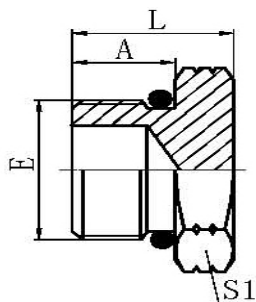
美制JIC内螺纹74°内锥堵头

JIC MALE 74° SEAT PLUG

代号 PART NO.	螺 纹 THREAD		尺 寸 DIMENSIONS		
	E		C	L	S
9J-04	7/16"X20		9	10.5	15
9J-05	1/2"X20		9.5	11	17
9J-06	9/16"X18		10.5	11	19
9J-08	3/4"X16		11	13	24
9J-10	7/8"X14		13	13.5	27
9J-12	1.1/16"X12		15	15	32
9J-14	1.3/16"X12		15	15	36
9J-16	1.5/16"X12		16	15.5	41
9J-20	1.5/8"X12		17	18.5	50
9J-24	1.7/8"X12		20	19	55
9J-32	2.1/2"X12		23.5	20.5	75

可按用户要求生产各种标准, 型号, 材质的产品

美制螺纹堵头

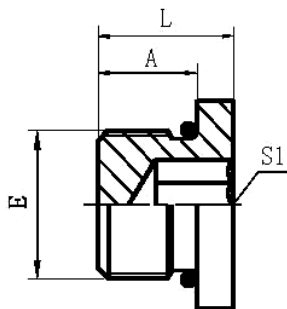


40

美制SAE外螺纹带O形圈堵头 ISO 11926-3

SAE O-RING BOSS PLUG
ISO 11926-3

代号 PART NO.	螺纹 THREAD	O 形圈 O-RING	尺寸 DIMENSIONS		
	E	E 端	A	L	S1
40-04	7/16"X20	8.92X1.83	9.1	16	14
40-05	1/2"X20	10.52X1.83	9.1	16	17
40-06	9/16"X18	11.89X1.98	9.9	17.5	17
40-08	3/4"X16	16.36X2.21	11.1	19.5	22
40-10	7/8"X14	19.18X2.46	12.7	23	27
40-12	1.1/16"X12	23.47X2.95	15.1	26.5	32
40-14	1.3/16"X12	26.62X2.95	15.1	27	36
40-16	1.5/16"X12	29.74X2.95	15.1	27.5	41
40-20	1.5/8"X12	37.46X3.00	15.1	30	50
40-24	1.7/8"X12	43.69X3.00	15.1	30	55
40-32	2.1/2"X12	59.36X3.00	15.1	32	70



40N

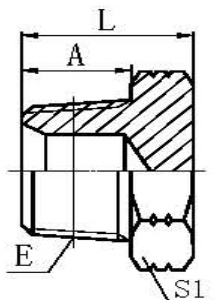
美制SAE外螺纹内六角堵头 ISO 11926-3

SAE O-RING BOSS HOLLOW HEX
PLUG ISO 11926-3

代号 PART NO.	螺纹 THREAD	O 形圈 O-RING	尺寸 DIMENSIONS		
	E	E 端	A	L	S1
40N-04	7/16"X20	8.92X1.83	9.1	11.5	5
40N-05	1/2"X20	10.52X1.83	9.1	11.5	5
40N-06	9/16"X18	11.89X1.98	9.9	12.2	6
40N-08	3/4"X16	16.36X2.21	11.1	14.3	8
40N-10	7/8"X14	19.18X2.46	12.7	16	10
40N-12	1.1/16"X12	23.47X2.95	15.1	19	14
40N-16	1.5/16"X12	29.74X2.95	15.1	19	17
40N-20	1.5/8"X12	37.46X3.00	15.1	19	19

可按用户要求生产各种标准, 型号, 材质的产品

美制螺纹堵头

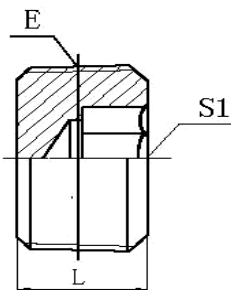


4N

美制布锥管外螺纹堵头

NPT MALE PLUG

代号 PART NO.	螺 纹 THREAD		尺 寸 DIMENSIONS		
	E		A	L	S1
4N-02	Z1/8"X27		10.5	16	12
4N-04	Z1/4"X18		15	20	17
4N-06	Z3/8"X18		16	21	19
4N-08	Z1/2"X14		19.5	27	22
4N-12	Z3/4"X14		19.5	29.5	27
4N-16	Z1"X11.5		25.5	36.5	36
4N-20	Z1.1/4"X11.5		26.5	38.5	46
4N-24	Z1.1/2"X11.5		27.5	43	50
4N-32	Z2"X11.5		27.5	43.5	65



4NN

美布锥管外螺纹内六角堵头

NPT MALE HOLLOW HEX PLUG

代号 PART NO.	螺 纹 THREAD		尺 寸 DIMENSIONS		
	E		L	S1	
4NN-02	Z1/8"X27		8	5	
4NN-04	Z1/4"X18		10	6	
4NN-06	Z3/8"X18		12	8	
4NN-08	Z1/2"X14		15	10	
4NN-12	Z3/4"X14		16	12	
4NN-16	Z1"X11.5		18	17	

可按用户要求生产各种标准, 型号, 材质的产品